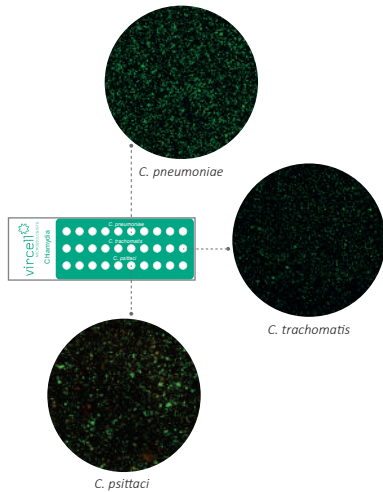




Immunofluorescence

Infectious Diseases complete panel



Chlamydia

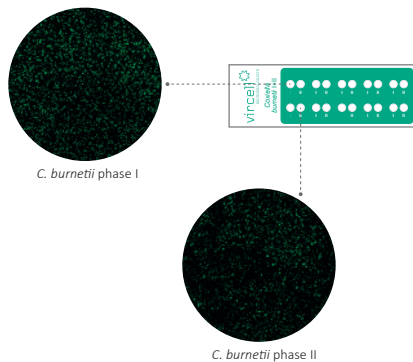
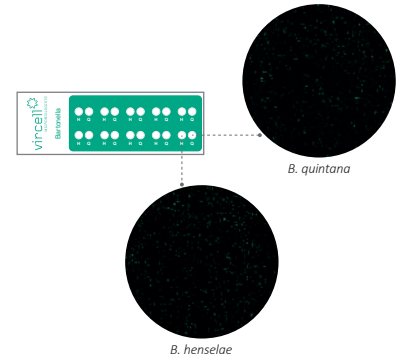
- **Indirect immunofluorescence** test for species-specific detection
- Aid in the differential diagnosis of **3 Chlamydia species** in fully coated separate wells: *C. pneumoniae*, *C. trachomatis*, *C. psittaci*
- **Elementary body antigen** (free from LPS) avoids cross-reactions

| Cat. No. | Description | CE Marking | Pack size |
|----------|------------------------------------|------------|-----------|
| PCHPNG | CHLAMYDOPHILA PNEUMONIAE IFA IgG | CE 0318 | 100 tests |
| PCHPNM | CHLAMYDOPHILA PNEUMONIAE IFA IgM | CE 0318 | 100 tests |
| SCHPN | CHLAMYDOPHILA PNEUMONIAE IFA SLIDE | CE 0318 | 100 tests |

Bartonella

- **Aide in the differential diagnosis** of *B. henselae* and *B. quintana*
- Fully coated separated wells to **facilitate the reading of results**

| Cat. No. | Description | CE Marking | Pack size |
|----------|--|------------|-----------|
| PBAHQG | BARTONELLA HENSELAE & QUINTANA IFA IgG | CE 0318 | 100 tests |
| PBAHQM | BARTONELLA HENSELAE & QUINTANA IFA IgM | CE 0318 | 100 tests |



Coxiella

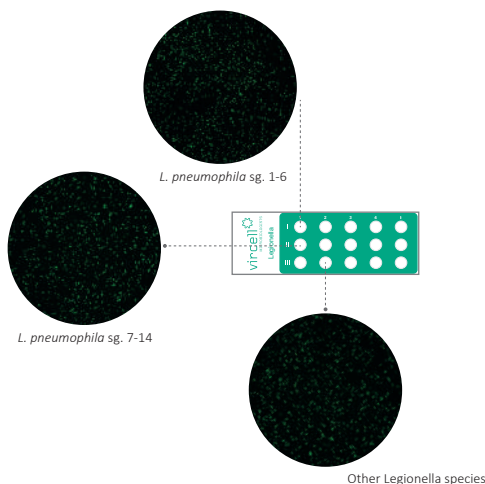
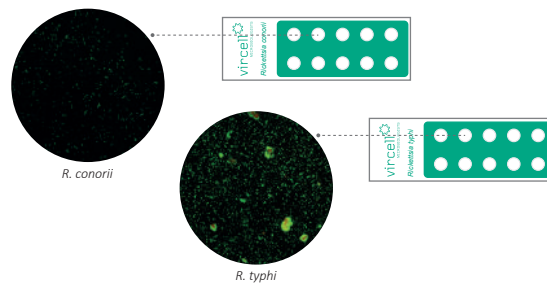
- IFA technique remain the gold standard method for a **differential diagnosis** of acute and chronic disease
- *Coxiella burnetii* **phase I and phase II** antigen in fully coated separate wells to facilitate the reading of results
- **IgG, IgM and IgA conjugates** available

| Cat. No. | Description | CE Marking | Pack size |
|------------|--|------------|-----------|
| PCOBUG | COXIELLA BURNETII IFA IgG | CE | 100 tests |
| PCOBUM | COXIELLA BURNETII IFA IgM | CE | 100 tests |
| PCOBU I+II | COXIELLA BURNETII I+II IFA IgG/IgM/IgA | CE | 100 tests |
| SCOBU | COXIELLA BURNETII IFA SLIDE | CE | 100 tests |

Rickettsia

- **Complete panel** for *Rickettsia typhi* and *Rickettsia conorii* detection
- IFA technique remain the gold standard method for an **early diagnosis without cross-reactions**

| Cat. No. | Description | CE Marking | Pack size |
|----------|------------------------------|------------|-----------|
| PRICOG | RICKETTSIA CONORII IFA IgG | CE | 100 tests |
| PRICOM | RICKETTSIA CONORII IFA IgM | CE | 100 tests |
| SRICO | RICKETTSIA CONORII IFA SLIDE | CE | 100 tests |
| PRITYG | RICKETTSIA TYPHI IFA IgG | CE | 100 tests |
| PRITYM | RICKETTSIA TYPHI IFA IgM | CE | 100 tests |



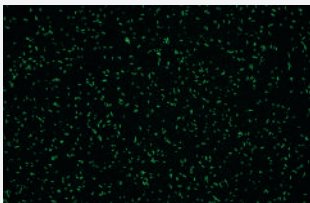
Legionella

- **Non- filamentous forms antigen** to avoid false positive results
- **Complete panel** of products for detection of LPN serogroup 1, LPN serogroups 1-6 and *Legionella* sp.

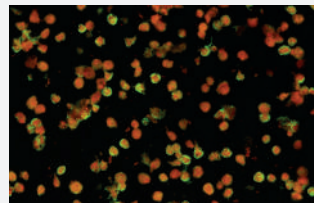
| Cat. No. | Description | CE Marking | Pack size |
|----------|---------------------------------------|------------|-----------|
| PLEPNG | LEGIONELLA PNEUMOPHILA IFA IgG | CE | 100 tests |
| PLEPNM | LEGIONELLA PNEUMOPHILA IFA IgM | CE | 100 tests |
| PLESXG | LEGIONELLA PNEUMOPHILA SG 1-6 IFA IgG | CE | 100 tests |
| PLESPG | LEGIONELLA SP IFA IgG | CE | 100 tests |

- Indirect immunofluorescence assay to simultaneously detect antibodies against the main viruses and bacteria causing atypical pneumonia
- MIF assay for more specific results in *C. pneumoniae*
- Easy results reading with fully coated separate wells
- Complete kits including all the necessary reagents to perform the technique

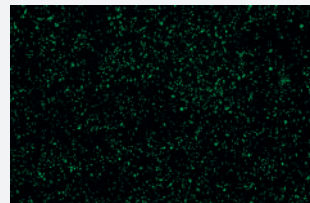
| Cat. No. | Description | CE Marking | Pack size |
|----------|--|--------------------|-----------|
| NBACT | PNEUMOBACT <i>L. pneumophila</i> sg 1, <i>M. pneumoniae</i> , <i>C. burnetii</i> , <i>C. pneumoniae</i> and <i>C. psittaci</i> | CE ₀₃₁₈ | 20 tests |
| NSLIDEG | PNEUMOSLIDE IgG <i>L. pneumophila</i> sg 1, <i>M. pneumoniae</i> , <i>C. burnetii</i> , <i>C. pneumoniae</i> , adenovirus, respiratory syncytial virus, influenza A, influenza B, parainfluenza 1, 2 and 3 and cell control | CE ₀₃₁₈ | 20 tests |
| NSLIDEM | PNEUMOSLIDE IgM <i>L. pneumophila</i> sg 1, <i>M. pneumoniae</i> , <i>C. burnetii</i> , <i>C. pneumoniae</i> , adenovirus, respiratory syncytial virus, influenza A, influenza B, parainfluenza 1, 2 and 3 and cell control | CE ₀₃₁₈ | 10 tests |



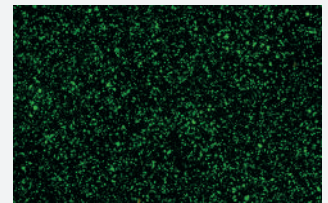
1. *Legionella pneumophila* sg 1



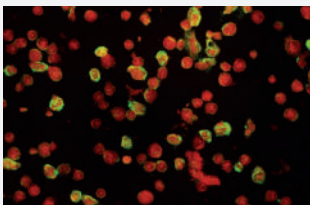
2. *Mycoplasma pneumoniae*



3. *Coxiella burnetii*



4. *Chlamydomphila pneumoniae*



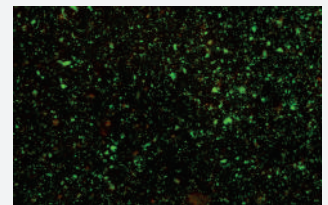
5. Adenovirus (NSLIDE)



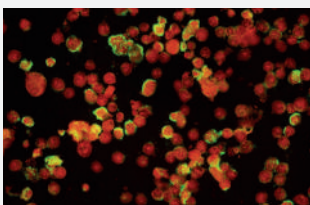
NSLIDEG-PNEUMOSLIDE IgG-20 tests
NSLIDEM-PNEUMOSLIDE IgM-10 tests



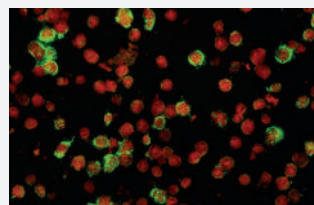
NBACT-PNEUMOBACT-20 tests



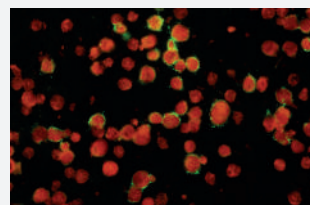
5. *Chlamydomphila psittaci* (NBACT)



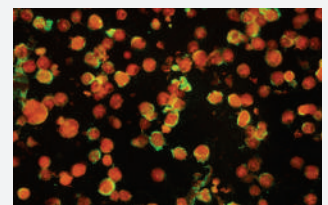
6. Respiratory syncytial virus



7. Influenza A



8. Influenza B



9. Parainfluenza 1, 2 and 3

Ordering information

Single Tests

| Cat. No. | Description | Class | Pack size |
|------------|--|--------------------|-----------|
| PBAHQG | BARTONELLA HENSELAE & QUINTANA IFA IgG | CE | 100 tests |
| PBAHQM | BARTONELLA HENSELAE & QUINTANA IFA IgM | CE | 100 tests |
| PCHAG | CHAGAS IFA IgG+IgM | CE | 100 tests |
| PCHPNG | CHLAMYDOPHILA PNEUMONIAE IFA IgG | CE ₀₃₁₈ | 100 tests |
| PCHPNM | CHLAMYDOPHILA PNEUMONIAE IFA IgM | CE ₀₃₁₈ | 100 tests |
| SCHPN | CHLAMYDOPHILA PNEUMONIAE IFA SLIDE | CE ₀₃₁₈ | 100 tests |
| PCOBUG | COXIELLA BURNETII IFA IgG | CE | 100 tests |
| PCOBUM | COXIELLA BURNETII IFA IgM | CE | 100 tests |
| PCOBU I+II | COXIELLA BURNETII I+II IFA IgG/IgM/IgA | CE | 100 tests |
| SCOBU | COXIELLA BURNETII IFA SLIDE | CE | 100 tests |
| PCAALG | INVASIVE CANDIDIASIS (CAGTA) IFA IgG | CE | 50 tests |
| PLEPNG | LEGIONELLA PNEUMOPHILA IFA IgG | CE | 100 tests |
| PLEPNM | LEGIONELLA PNEUMOPHILA IFA IgM | CE | 100 tests |
| PLESXG | LEGIONELLA PNEUMOPHILA SG 1-6 IFA IgG | CE | 100 tests |
| PLESPG | LEGIONELLA SP IFA IgG | CE | 100 tests |
| PLEDOG | LEISHMANIA IFA IgG | CE | 100 tests |
| SLEDO | LEISHMANIA IFA SLIDE | CE | 100 tests |
| PMYPNG | MYCOPLASMA PNEUMONIAE IFA IgG | CE | 100 tests |
| PMYPNM | MYCOPLASMA PNEUMONIAE IFA IgM | CE | 100 tests |
| PRICOG | RICKETTSIA CONORII IFA IgG | CE | 100 tests |
| PRICOM | RICKETTSIA CONORII IFA IgM | CE | 100 tests |
| SRICO | RICKETTSIA CONORII IFA SLIDE | CE | 100 tests |
| PRITYG | RICKETTSIA TYPHI IFA IgG | CE | 100 tests |
| PRITYM | RICKETTSIA TYPHI IFA IgM | CE | 100 tests |

MultiTests

| Cat. No. | Description | Class | Pack size |
|----------|--|--------------------|-----------|
| NBACT | PNEUMOBACT <i>L. pneumophila</i> sg 1, <i>M. pneumoniae</i> , <i>C. burnetii</i> , <i>C. pneumoniae</i> and <i>C.psittaci</i> | CE ₀₃₁₈ | 20 tests |
| NSLIDEG | PNEUMOSLIDE IgG <i>L. pneumophila</i> sg 1, <i>M. pneumoniae</i> , <i>C. burnetii</i> , <i>C. pneumoniae</i> , adenovirus, respiratory syncytial virus, influenza A, influenza B, parainfluenza 1, 2 and 3 and cell control | CE ₀₃₁₈ | 20 tests |
| NSLIDEM | PNEUMOSLIDE IgM <i>L. pneumophila</i> sg 1, <i>M. pneumoniae</i> , <i>C. burnetii</i> , <i>C. pneumoniae</i> , adenovirus, respiratory syncytial virus, influenza A, influenza B, parainfluenza 1, 2 and 3 and cell control | CE ₀₃₁₈ | 10 tests |

Other IFA products

| Cat. No. | Description | Class | Pack size |
|----------|-------------|---------|-------------|
| S002 | IFA SORBENT | CE IVDR | 100 tests |
| S002-100 | IFA SORBENT | CE IVDR | 4,000 tests |

Vircell, S.L.

Parque Tecnológico de la Salud, Avicena 8 18016 Granada. Spain. Tel. +34 958 441 264
info@vircell.com www.vircell.com