

Monotest Solution as an aid in the Diagnosis of **COVID-19**

Indirect chemiluminescent immunoassay (CLIA) to detect antibodies against SARS-CoV-2, producing COVID-19, in human serum or plasma.

COVID-19 VIRCLIA[®] IgM+IgA MONOTEST
COVID-19 VIRCLIA[®] IgG MONOTEST

- SARS-CoV-2 specific antigens.
- Simple and automated protocol with results in 1 hour.
- Unique and definitive solution for urgent samples.
- Same day results, no batching, no sample cumulation.
- Complete solution: IgG and IgM+IgA kits available.
- Simultaneous detection of IgM and IgA improves sensitivity in the acute phase of the disease.
- Excellent sensitivity with proven PCR positive samples.

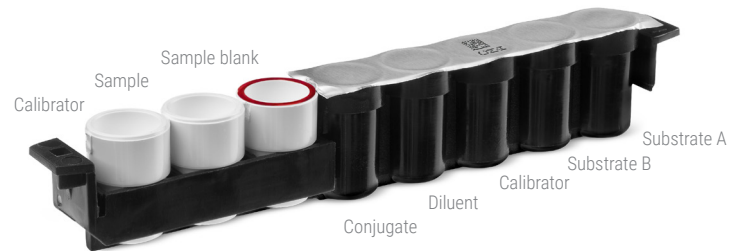


VirClia[®] MONOTEST - 24 tests



THE TRUE MONOTEST

- On-demand testing: **One monotest= one reportable test.** Nothing else is required.
- **SARS-CoV-2 specific antigens:** spike glycoprotein (S) and nucleocapsid protein (N).
- **Individual Quality Control per monotest,** no need for extra controls or calibrations.



Excellent performance

Clinical sensitivity and specificity have been determined by testing a broad panel of samples against a commercial ELISA kit.

Both VirClia® products achieve 100% sensitivity on samples taken >21 days after onset of symptoms.

	COVID-19 VIRCLIA® IgM+IgA	COVID-19 VIRCLIA® IgG
No. of samples	842	1,121
Sensitivity	100%	98%
Specificity	99%	99%

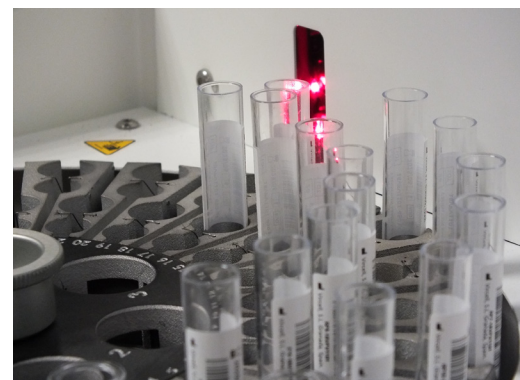
PM1E099-06/22



Random Access, Continuous Loading.



Total flexibility, STAT function.



Primary sample tubes.
Positive identification of samples & strips.

Ordering information

Reference	Description	Pack size
VCM097	COVID-19 VIRCLIA® IgG MONOTEST	24 tests
VCM098	COVID-19 VIRCLIA® IgM+IgA MONOTEST	24 tests
VCM100	COVID-19 SPIKE QUANTITATIVE VIRCLIA® IgG MONOTEST	24 tests