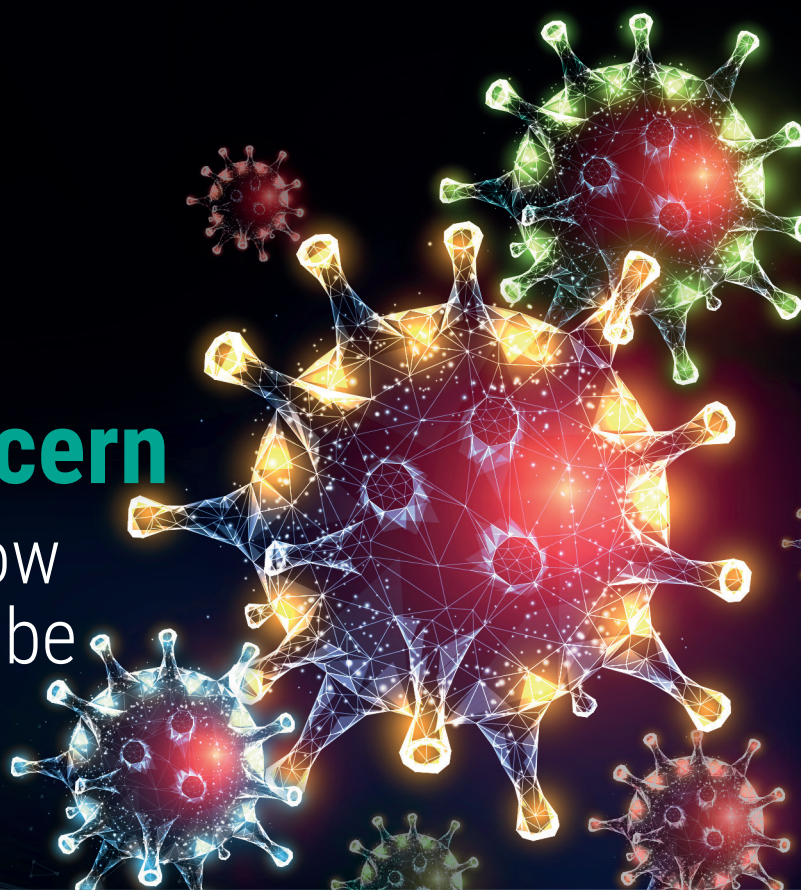


Emerging SARS-CoV-2 Variants of Concern

What you need to know
in a single reaction tube



SARS-COV-2 VARIANTS REALTIME PCR KIT

Real-time reverse transcription and amplification of nucleic acids in one step for detection of SARS-CoV-2 and identification of the main SARS-CoV-2 variants of concern.

- 4 targets Multiplex PCR detection- one single reaction tube per sample.
- Identification of the main SARS-CoV-2 variants of concern, B.1.1.7 (UK), B.1.351 (South Africa), P.1 (Brazil), B.1.525 (Nigeria) and B.1.258Δ (Czech Republic), by presence and/or absence of specific targets.
- Endogenous human *RNase P* control- for detecting unsuitable sample collection or degradation.
- Suitable for 4-channel qPCR cyclers: FAM, HEX (VIC), Texas Red (ROX) and Cy5.
- Fast and reliable results in under 2 hours.
- Lyophilized master mix and positive control to ensure stability and reduce transportation costs.
- Different kit presentations for greater user convenience: vials and pre-dispensed strips.



Ref. RTPCR010-LP



Ref. RTPCR010

Emerging SARS-CoV-2 Variants of Concern



APPLICATIONS

Oropharyngeal/nasopharyngeal swab and saliva. Alternatively, tracheal aspirates, bronchoalveolar lavage (BAL) can be used.

CONTENT

Single mix, Reconstitution solution, Positive control and Negative control. The mix includes internal control primers/probes for human specimen validation that detect improper sample collection or degradation.

Kit formats:

Ref. RTPCR010 contains 6 glass vials of lyophilized master mix. Reaction tubes are not included.

Ref. RTPCR010-LP contains caps and 12x8 PCR strips with pre-dispensed lyophilized master mix.

COMPATIBILITY

Extraction systems: Qiagen (Viral RNA Mini Kit & MinElute Virus Spin Kit), bioMérieux (NucliSENS® easyMag®), Roche (MagNA Pure System), TANBead (Maelstorm 9600), ThermoFisher (KingFisher Flex) and Bruker (GenoXtract 12) among others.

RealTime PCR thermocyclers: Bio Rad (CFX96), Roche (LightCycler® 96, 480 and COBAS® z480), Agilent (Aria Mx), Applied Biosystems (7500 Fast) and QuantStudio 5, among others.

PERFORMANCE

	Sensitivity	Specificity	No. of samples
SARS-CoV-2	97%	100%	120
B.1.1.7	100%	100%	125
B.1.351/P.1	96%	100%	104

Analytical sensitivity - Limit of detection:

	copies/ml	copies/reaction
SARS-CoV-2	1250	6.25
B.1.1.7	625	3.12
B.1.351/P.1	1250	6.25

ORDERING INFORMATION AND RELATED PRODUCTS

Description	Reference	Content
SARS-COV-2 VARIANTS REALTIME PCR KIT NEW	RTPCR010/-LP	96 tests
DIRECT SARS-COV-2 REALTIME PCR KIT	RTPCR002/-LP/-LPP	96 tests
AMPLIRUN® SARS-CoV-2 RNA CONTROL	MBC137-R	12,500-20,000 copies/μl
AMPLIRUN® SARS-CoV-2 B.1.1.7 RNA CONTROL	MBC138-R	12,500-20,000 copies/μl
AMPLIRUN® SARS-CoV-2 B.1.351 RNA CONTROL	MBC139-R	12,500-20,000 copies/μl

Vircell S.L.

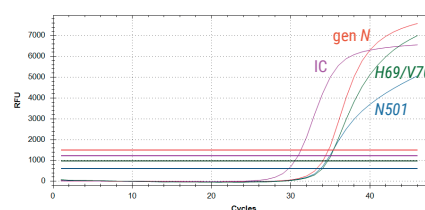
Parque Tecnológico de la Salud, Avicena 8 18016 Granada, Spain.
info@vircell.com www.vircell.com

TARGETS

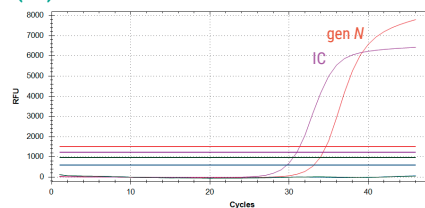
	Target	Channel
SARS-CoV-2 (generic)	N gene	Texas Red/ROX
SARS-CoV-2 (variant)	S gene – N501	FAM
SARS-CoV-2 (variant)	S gene – H69/V70	HEX/VIC
Internal control (IC)	Human RNase P gene	Cy5

INTERPRETATION OF RESULTS

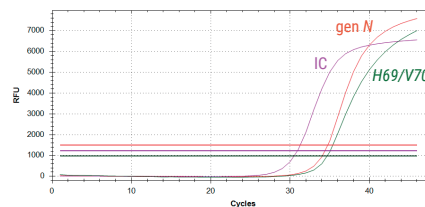
SARS-CoV-2 WILD TYPE



B.1.1.7 (UK) VARIANT



B.1.351 (SOUTH AFRICA)/ P.1 (BRAZIL) VARIANTS



B.1.525 (NIGERIA)/ B.1.258Δ (CZECH REPUBLIC) VARIANTS

